



# Murchison Monologue



AUGUST/SEPTEMBER 2012

VOL.32

NUMBER 5



## Meet Jenny Goodbourn our new CEO



Jenny's husband Steve



## Welcome Jenny & Steve

Jenny commenced work with us on the 20th of August. She comes to join our team as CEO with 12 years experience in Local Government. The last 2 years have been as Deputy CEO at Cue and 6 <sup>1</sup>/<sub>2</sub> years prior to that as Deputy CEO at Sandstone. Jenny is joined by her husband Steve and Togolosh their dog.



## Thank you Neil & Elsie

Farewell and thank you to Neil & Elsie who came here in January for 6 weeks and stayed 6 months. We really appreciate the time you put into helping us out until our new CEO was appointed.





# Visit to the SKA

The Administration staff from the Shire office were fortunate enough to receive an invitation to a Neighbour's BBQ and visit to the Murchison Radio-astronomy Observatory (MRO) and the Australian Square Kilometre Array Pathfinder (ASKAP) radio telescope.



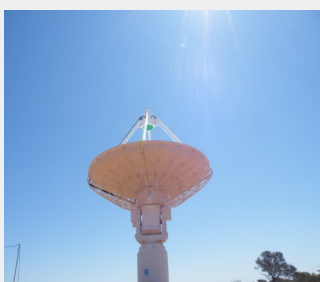
All visitors/guests met at the MRO entrance on Pindar-Beringarra Road. From there we formed a convoy and drove to the MRO Central Site and ASKAP Antennas .



Once on site we gathered under the shade of the new Control Building and were given a welcome speech by Ant Schinckel (ASKAP Project Director). This was followed by a safety induction and then a Heritage induction was given by Robin Boddington (ASKAP Aboriginal Liaison Officer). We were then split into two groups and given a tour of the Control Building and the ASKAP Antennas by Ant & Suzie. It was amazing to find out how much work has gone into this project and also to hear from our very enthusiastic guides on what lays ahead.



Once our tour of the site and antennas was completed we then travelled to the CSIRO Accommodation Facility next to Boolardy Homestead where we enjoyed a lovely BBQ lunch and refreshments provided by our hosts. This gave everyone the chance to have a chat and ask any questions. It was a very informative day and a great opportunity.





## THE SITE

### THE MRO

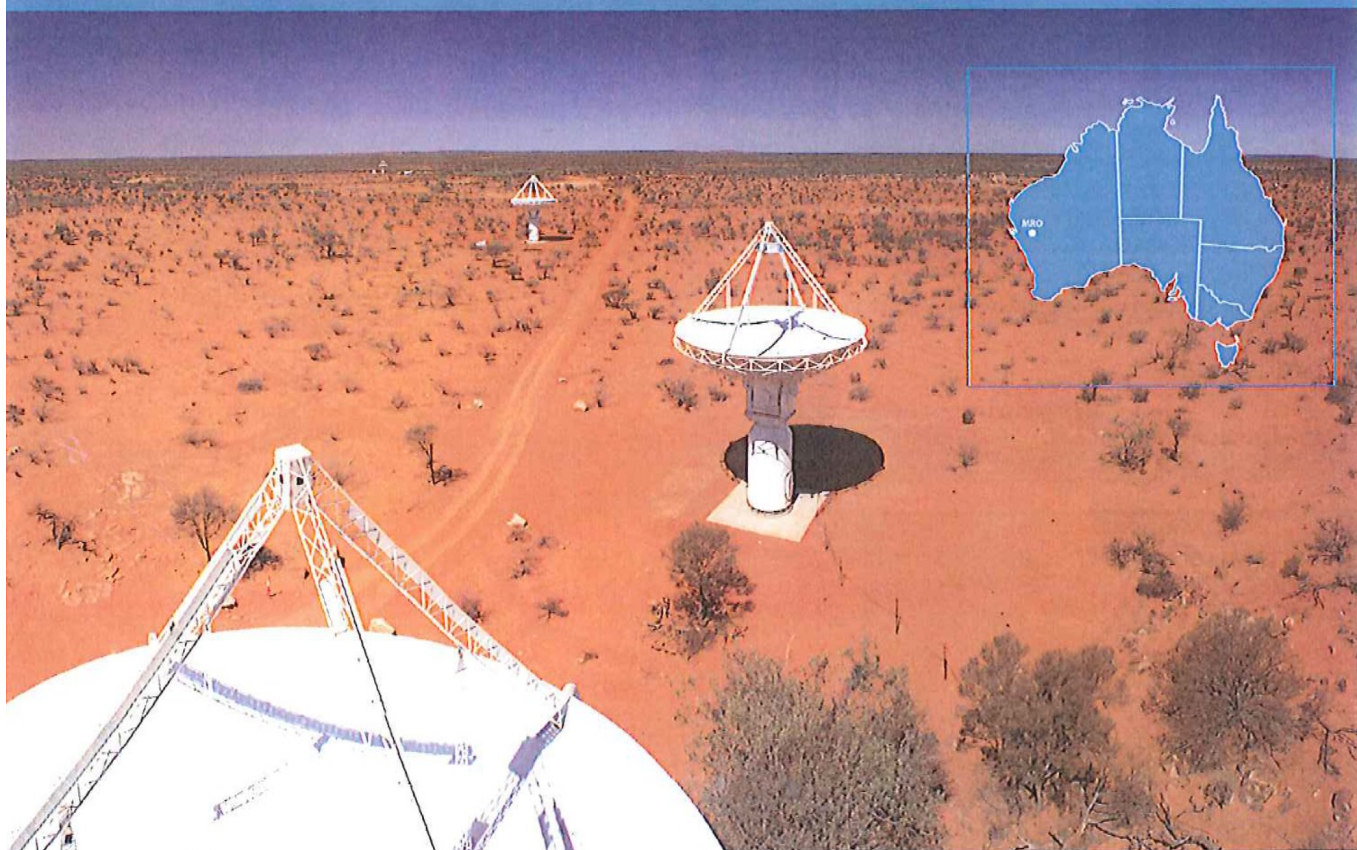
The 126km<sup>2</sup> Murchison Radio-astronomy Observatory (MRO) in Western Australia's Mid West region will be Australia's core site for the SKA. Extreme radio-quiet due to low population density makes the MRO the ideal site for radio astronomy.

### ASKAP

CSIRO's 36 dish Australian SKA Pathfinder (ASKAP) telescope is currently being built at the MRO and will be operational in 2013. A powerful telescope in its own right, ASKAP will also help drive technology for the SKA, such as the development of phased array feeds or 'radio cameras'. When complete, ASKAP will be the world's foremost survey radio telescope.

### MWA

The Murchison Widefield Array (MWA) is an Australian, US, New Zealand and Indian collaboration at the MRO to develop technology for the SKA low frequency array. Comprising 2048 antennas in 128 clusters, the telescope will be operational by 2013.



### SKA PHASE 1

#### 96 dish survey telescope

SKA phase 1 will see a build-out of ASKAP to form a 96 dish survey telescope. This high-tech instrument will utilise phased array feed receiver technology to survey the sky in a fraction of the time of existing telescopes.

With fast survey times, this telescope will allow scientists to rapidly investigate many millions of objects in the universe, map large structures, and monitor the sky for rapidly changing, transient radio objects.

Roughly 80% of the SKA phase 1 dishes will be within 5km of the centre of the array, with the other 20% extending outwards in spiral arms.

#### Low frequency array

In SKA phase 1, thousands of low frequency antennas will inhabit the Australia and New Zealand SKA core site.

This low frequency telescope will investigate the early Universe's 'dark ages' shortly after the Big Bang to observe the re-ionisation of hydrogen gas and its formation into the first stars and galaxies.

Just like the 96 dish survey telescope, this low frequency array will have a dense core of antennas and extend outwards along spiral arms.

### SKA PHASE 2

In SKA Phase 2, the low frequency array will be extended with many thousands more antennas spread across Australia, and possibly into New Zealand. The increased collecting area will make this array more sensitive, while the great distance between the two furthest antennas will provide greater image resolution.



Australian Government

New Zealand Government



[www.ska.gov.au](http://www.ska.gov.au)  
[www.ska.govt.nz](http://www.ska.govt.nz)

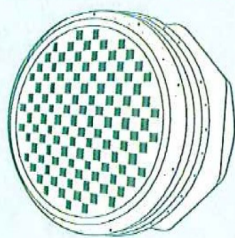


# The Square Kilometre Array in Australia

**The Square Kilometre Array will be a revolutionary new radio telescope built on two sites in the southern hemisphere – Australia and southern Africa.**

Different components of the telescope will be situated in different countries. Australia will host both an innovative survey telescope utilising CSIRO's phased array feed receiver technology, and a low frequency array that will be able to image the first stars and galaxies that formed after the Big Bang.

Construction of the first phase of the SKA will begin in 2016, with work on a second phase planned to begin in 2020.



## PHASED ARRAY FEED (PAF) RECEIVER

- ▶ The survey component of the SKA will use Phased Array Feed (PAF) technology
- ▶ The PAF looks like a chequerboard and is placed at the focal point of the dish
- ▶ It forms multiple beams from the sky. It can view an area 30 x larger than a traditional radio telescope. This means great time savings when surveying the sky
- ▶ The PAF is a highly technical part of the telescope which will produce vast amounts of data
- ▶ It was developed by Australia's CSIRO
- ▶ PAF technology may have further uses in medical imaging and security

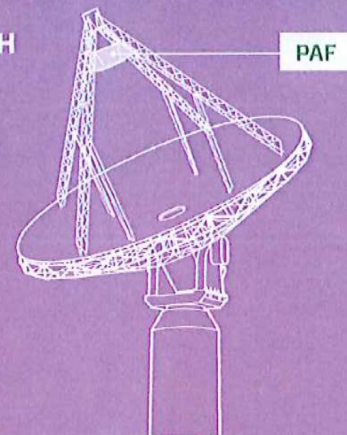
## Scale comparison



## THE ANTENNA TYPES

### ASKAP 3-AXIS ROTATION DISH

- ▶ 36 already on site comprising the Australian SKA Pathfinder (ASKAP) telescope
- ▶ 12 metre diameter dish – standing over 3 storeys tall
- ▶ Proven accuracy
- ▶ 3-axes of rotation (up-down, left-right, rotation)
- ▶ Carries phased array feed technology
- ▶ Captures mid frequency radio waves



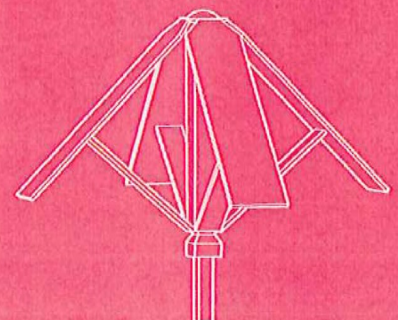
### POSSIBLE SKA DISH

- ▶ 60 dishes to be added to ASKAP to form a 96 dish survey telescope
- ▶ Offset design maximises data capture
- ▶ 15 metre diameter – standing over 3 storeys tall
- ▶ Carries phased array feed technology
- ▶ Captures mid frequency radio waves



### LOW FREQUENCY ANTENNA

- ▶ Captures low frequency radio waves
- ▶ No moving parts – computers are used to isolate the object to be studied by focusing in on data from one area of sky
- ▶ Thousands of antennas will be placed at the core site for SKA Phase 1 (Construction from 2016)
- ▶ The low frequency array will be extended across Australia and New Zealand in SKA Phase 2 (Construction from 2020)







## What is radio astronomy?

Radio astronomy, like optical astronomy, examines the electromagnetic radiation from objects outside the Earth's atmosphere – stars, galaxies and other cosmic objects. Where optical telescopes gather light, radio telescopes gather radio waves.

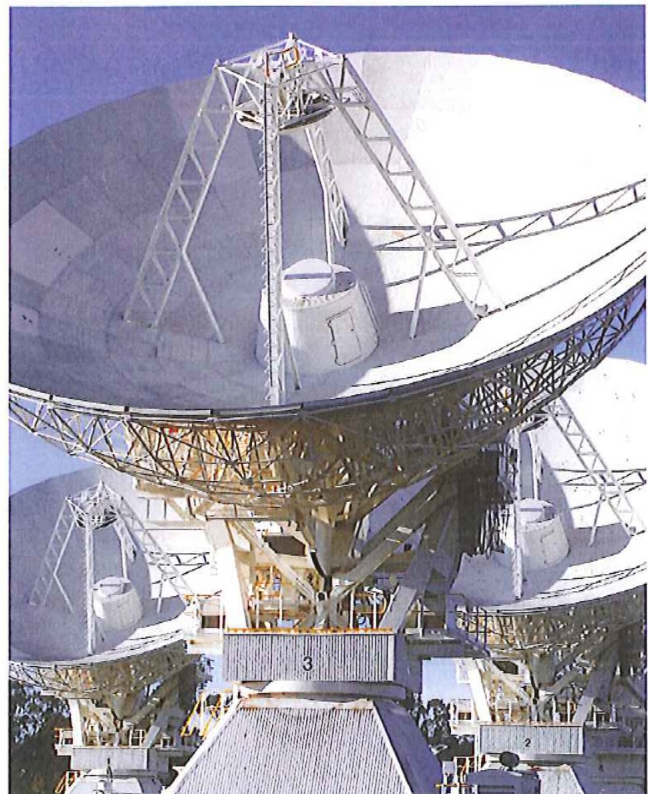
Astronomers use both light and radio waves to learn about the objects in space that emit them. Information about objects, including their size, shape and composition, can be ascertained from their radio or light emissions. Radio waves can penetrate through cosmic dust allowing astronomers to look into regions such as the centre of our Galaxy, the Milky Way, which is obscured by dust at optical wavelengths.

## What are radio waves?

Radio waves are a form of electromagnetic radiation, as are light waves. Since wavelength and frequency are inversely related, lower frequency means longer wavelength. Radio waves are low frequency waves and thus have a greater wavelength than light waves. In fact light waves have wavelengths measured in hundreds of nanometres, while radio waves are measured in up to tens of metres. Low frequency also means low energy, so radio waves have less energy than light waves as well.

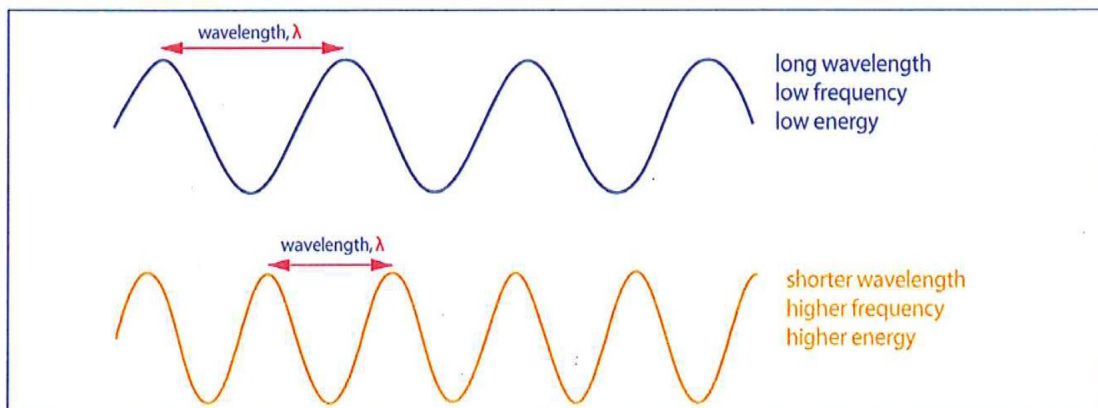
Since radio waves can penetrate through dust, and different cosmic objects radiate most strongly at different frequencies, something which cannot be seen with an optical telescope can often be 'seen' with a radio telescope.

The longer wavelength of radio waves means radio telescopes need to be much larger than optical telescopes to generate high resolution images. Radio telescopes are some of the largest scientific instruments in the world.



CSIRO's Australia Telescope Compact Array near Narrabri in NSW.  
Credit: David Smyth, CSIRO.

## Electromagnetic waves





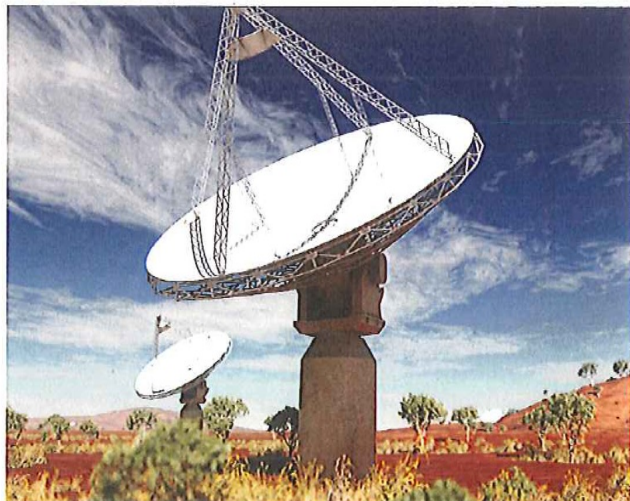
## Radio telescopes

Radio telescopes are very sensitive devices that measure the intensity of radio waves over a band of frequencies. Their antennas are often in the shape of a 'dish' or cylindrical reflector to provide a large collecting area. The radio waves are reflected off the collector surface and are focused onto a receiver. Australia's largest single dish radio telescope is CSIRO's Parkes radio telescope, also known as 'The Dish'. The information, once collected, is then electronically amplified and processed so that it can be measured by a computer and interpreted by astronomers.

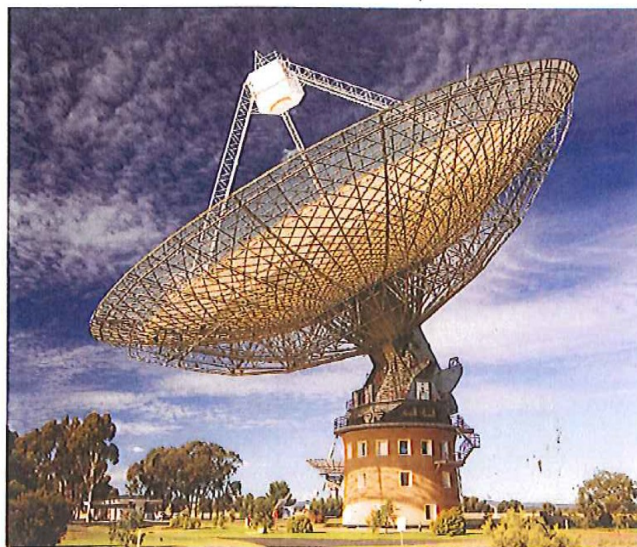
When two (or more) signals are combined from separate antennas the telescope is known as an *interferometer*. Signals from an interferometer can be electronically combined to simulate a single dish of a size equal to the largest antenna separation – the bigger the separation, the better the resolution of the image that can be produced. The sensitivity of an interferometer increases as the total amount of collecting area increases. This is one reason why the Square Kilometre Array will be such a revolutionary radio telescope.

## Where are radio telescopes sited?

Because they are so sensitive to radio emissions, radio telescopes are highly susceptible to interference from modern-day radio-communication services and emissions from other electrical equipment. To minimise such interference radio astronomy antennas are usually placed in remote locations where there is a low population density.



Artist's impression of the Australian Square Kilometre Array Pathfinder (ASKAP) telescope, a new telescope being built by CSIRO in Western Australia.  
Credit: Swinburne Astronomy Productions, design data provided by CSIRO.



CSIRO's Parkes radio telescope is also known as 'The Dish'.  
Credit: David McClenaghan, CSIRO.

## History of radio astronomy

The first radio astronomy observations were made in 1932 by the USA Bell Laboratories physicist Karl Jansky. He detected cosmic radio noise from the centre of the Milky Way galaxy while he was investigating radio disturbances to a trans-oceanic telephone service. Then, with the development of radar in the Second World War, improvements to antennas and electronics were made. This meant that after the war, scientists could start to investigate radio signals coming from space.

## Australia's role in radio astronomy

Australia has been at the forefront of radio astronomy since the early days with scientists at CSIRO's Radiophysics Laboratory using an antenna perched high on a cliff at Dover Heights in Sydney to make many important discoveries. Since then Australia has developed a strong tradition of excellence in radio astronomy and is acknowledged as a world leader in this field.

## For further information

### Contact:

Rob Hollow

CSIRO Astronomy and Space Science

Email: [robert.hollow@csiro.au](mailto:robert.hollow@csiro.au)



Australian Government

New Zealand Government



July 2010

► [www.ska.gov.au](http://www.ska.gov.au)  
► [www.ska.govt.nz](http://www.ska.govt.nz)



## ASKAP Update

CSIRO Astronomy and Space Science

August 2012

The ASKAP Update is a regular series dedicated to conveying the latest news about the Australian SKA Pathfinder (ASKAP) project to international science and engineering communities. It is available online at [www.atnf.csiro.au/projects/askap](http://www.atnf.csiro.au/projects/askap).

### ASKAP dishes exceed accuracy specifications

Final site acceptance tests carried out on all 36 of the ASKAP antennas now standing at the Murchison Radio-astronomy Observatory (MRO) have confirmed reflector accuracy more than twice the required ASKAP specification.

The ASKAP antenna reflectors were designed to a surface accuracy of 1.0 mm, to allow for astronomy-capable operation up to 10 GHz. The surface accuracy actually achieved on all 36 delivered antennas has been close to, or better than, 0.5mm, effectively increasing the range of astronomy-capable operation up to 20 GHz.

According to ASKAP Project Director Ant Schinckel, the assembly of all 36

antennas at the MRO is an important milestone for the ASKAP team which allows the project to transition from construction mode to focus on more on-sky commissioning activities.

"Following the completion of other construction activity at the MRO, we're now able to concentrate on the fit-out of the complex receiver and computing systems that will enable ASKAP to survey the sky faster than any other radio telescope."

Other essential infrastructure works on site include the completion of the MRO Control Building, a unique facility that will house the complex digital systems of ASKAP, including the ASKAP beamformers and correlator, as well as termination points for approximately 7600 high-bandwidth optical fibre links

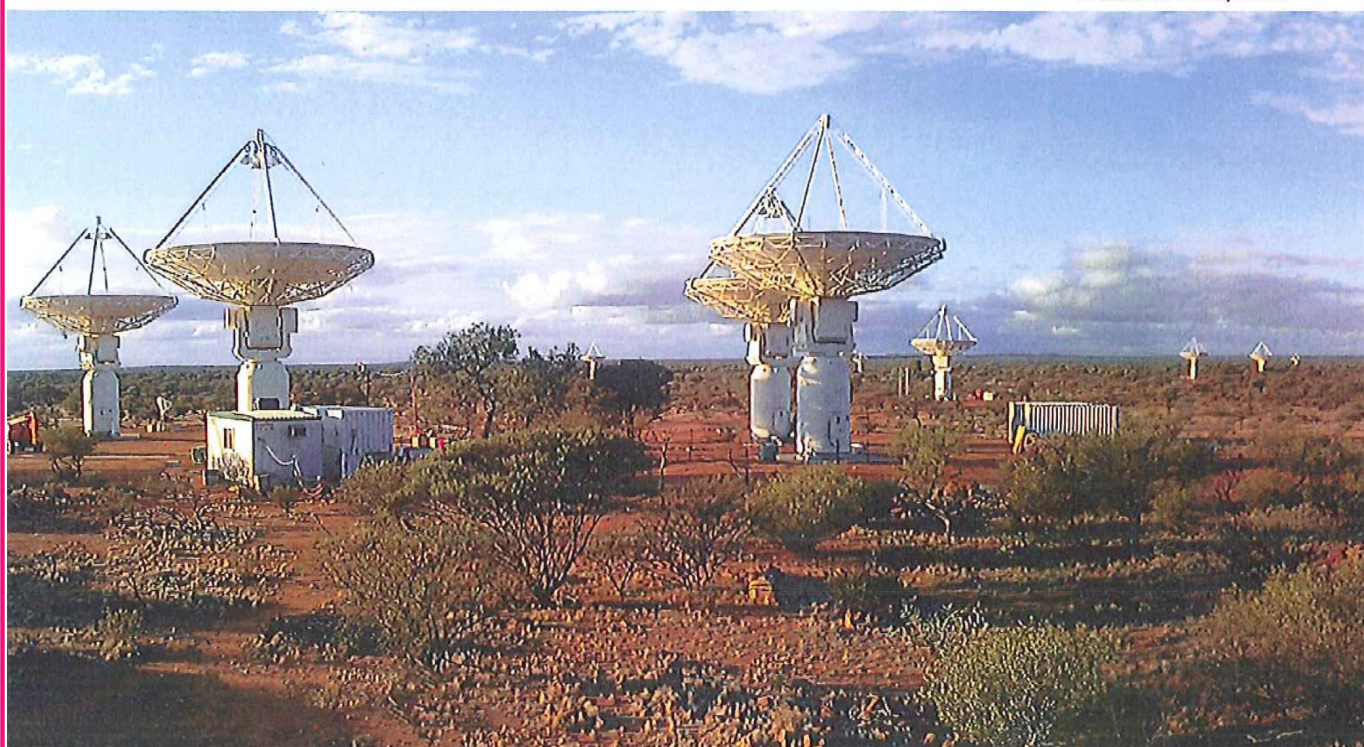
from ASKAP and the other international projects on site, and the fibre link to Geraldton.

Another major activity at the MRO was the recent launch, installation, testing and support of the bespoke ASKAP Telescope Operating System (TOS) software into all on site computers.

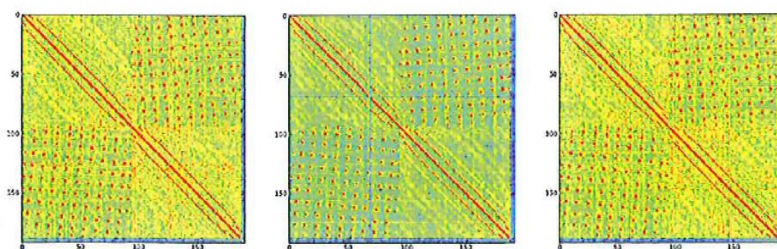
This version of the TOS allows remote operation, monitor and control of the ASKAP antennas from the CSIRO Astronomy and Space Science (CASS) headquarters in Sydney, and will be developed for commissioning of the Boolardy Engineering Test Array (BETA).

**Antennas of CSIRO's Australian SKA Pathfinder at the Murchison Radio-astronomy Observatory. Final site acceptance tests on the antennas have returned surface accuracy results better than design specification.**

**Credit: John Tuthill, CSIRO.**







Array Covariance Matrices (ACM) captured for the first time simultaneously on (L-R) ASKAP Antennas 1, 3 and 6. This result is an important precursor to obtaining PAF-to-PAF fringes using data capture and software correlator.

### System verification due in coming months

Three of the six ASKAP antennas that will make up BETA are now fully equipped with phased array feed (PAF) receivers and all associated beam-forming electronics, in preparation for the first phase of systems commissioning. The three PAFs form a real-time three-baseline system, which, along with the software correlator highlighted in the previous edition of the ASKAP Update, will allow for system verification tests in the coming months.

Firmware and software have made it possible, for the first time, to synchronise the capture of an Array Covariance Matrix (ACM) – a diagnostic that captures most of the vital signs of the PAF receiver in pictorial form. Each of the three PAF receivers now on site was tested individually, and recorded at the same moment.

The positive stability results reflected by the ACM and the verification of event-driven beamformer synchronisation are another step on the path towards simultaneous beamformed data capture and subsequent correlation.

"We're getting a lot of good quality data," says ASKAP System Engineering, Integration and Commissioning (SEIC) team leader John Reynolds, "The

team is now poised to link antennas together and obtain the first fringes, or correlation, on an astronomical source between two PAF receivers. The next goal will be to repeat the correlation procedure with a three PAF baseline to form a complete triangle, and achieve phase closure between the receivers."

The correlations will be performed in software using data captured simultaneously from the three beamformers and post-processed using standard astronomical imaging software.

This first demonstration of PAF-to-PAF fringes on three antennas will be followed by delivery and commissioning of the next three antennas making up the full BETA array, and commissioning of the six-antenna BETA hardware correlator.

### Next generation PAF under development

Since August 2011, development of a second generation (MkII) receiver chain for ASKAP has been underway through a work package known as the ASKAP Design Enhancement (ADE). Design optimisation of a new PAF has been the focus of the team, with an emphasis on reducing total system costs (including utilising new cost effective technologies) – design for

manufacturability and testability was also given careful consideration. By creating a highly reliable and modular design, the ADE system will also provide ASKAP with a high degree of availability, provide significant benefits in system performance, will reduce manufacture complexity and increase maintainability.

Enhancements to the system include improved performance across the ASKAP band for the PAF receiver, signal transmission using RF-over-fibre, direct sampling of the RF signal at the MRO Control Building, and hardware for digital signal processing that uses the latest in FPGA (field-programmable gate array) and high speed communication devices.

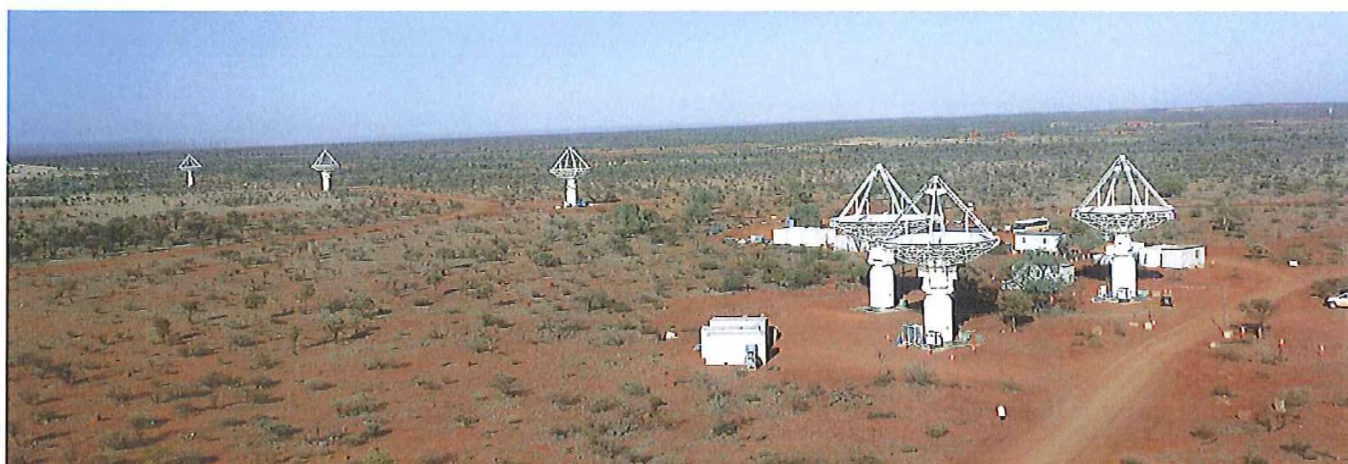
An Integration Readiness Review is scheduled for later this year, and will be the final major quality gate before high-level integration testing of the first-of-type ADE system will start.

In the meantime, continued testing of the PAF data capture, beamformers and antenna drive software has been underway with regular observing sessions scheduled on the Parkes Testbed Facility (PTF), a 12-m testbed antenna equipped with a prototype PAF working in conjunction with the multibeam receiver installed on the 64-m Parkes radio telescope.

The testbed remains an invaluable resource for developing new receiver technology and gaining crucial insight into PAF performance. Recently it was used to test a proof-of-concept design for the MkII PAF design, successfully demonstrating excellent performance across the entire ASKAP frequency band. It will continue to be used as this design evolves to the full-sized PAF for ASKAP.

Stay tuned for the next edition of the ASKAP Update, which will feature details of the new ADE PAF.

The assembly of all 36 ASKAP antennas at the MRO was completed in May 2012. The next step in commissioning will be to fit-out the antennas with innovative receiver technology and complex digital and computing systems.  
Credit: Steve Barker, CSIRO.







## Western Australia in winter 2012: A very dry winter

**Rainfall:** 7th driest winter for WA; 6th driest for southwest WA

**Maximum temperature:** above average for WA

**Minimum temperature:** 7th coolest winter for WA; near average for southwest WA

### Rainfall

Rainfall during winter 2012 was below to very much below average throughout much of WA, and a few sites in the Great Southern observed their lowest winter rainfall in over 100 years of record, with the previous record being winter 2010. This low rainfall was in stark contrast to the above average rainfall reported in the nearby South and Southeast Coastal districts, mainly due to heavy rainfall in early June, and the fact that two sites in the South Coastal district reported their highest winter rainfall on record. Averaged across WA as a whole, winter rainfall was the 7th driest on record, whilst the Lower Southwest (southwest of a line from Jurien Bay to Bremer Bay) ranked as the 6th driest for winter 2012 (comparable records commenced in 1900) mainly due to the region registering its driest July on record. For the Southwest Land Division (SWLD) as a whole, rainfall in winter 2012 ranked as the 9th driest on record.

### Murchison 2012 Rainfall

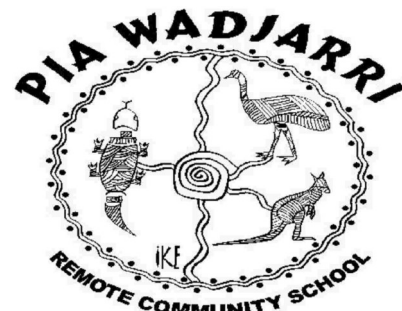
January	February	March	April	May	June	July	August	September
30.4	22.6	7.0	9.6	0.0	51.9	13.8	6.6	5.0

### Extremes in winter 2012

Hottest day	38.5 °C at Fitzroy Crossing Aero on 27 Aug
Warmest days on average	31.7 °C at Kalumburu
Coolest days on average	15.7 °C at Rocky Gully
Coldest day	10.1 °C at Norseman Aero on 10 Jul
Coldest night	-4.2 °C at Yeelirrie on 7 Jul -4.2 °C at Warburton Airfield on 8 Jul
Coolest nights on average	3.5 °C at York
Warmest nights on average	21.3 °C at Troughton Island 14.8 °C at Wyndham
Warmest night	24.7 °C at Troughton Island on 3 Jun 23.3 °C at Argyle Aero on 26 Aug
Wettest overall	578.2 mm at Walpole
Wettest day	174.2 mm at Peppermint Grove on 2 Jun
Highest wind gust	146 km/h at Cape Naturaliste on 10 Jun



# Pia Wadjjarri Remote Community School News



## Interschool Carnival

19<sup>th</sup> – 21<sup>st</sup> September Murchison Interschool carnival to be held at the Murchison Settlement



## New Bus

Variety Club have kindly donated a 'Sunshine Coach' to the school. The bus will be picked up this week. It's first job will be to take students to the dentist.

## Sunshine Coaches

Sunshine Coaches transport children from special schools and other organisations to activities that enable

Contacting the School

PH: 9961 3842

FAX: 9961 3846

AIEO: Rachael Papertalk

EA: Julie Ryan

EA: Joshua Thomson

Gardener: Lawrence Merry

School Officer:

Teachers:

Barry Powell

Jessica Guilfoyle



**Variety WA** is all about empowering Western Australian children who are sick, disadvantaged or have special needs to live, laugh and learn.

With the help of dedicated volunteers, and generous individual and corporate supporters, Variety offers freedom, care and a future to WA kids in need through grants of tangible items to individual children and families, as well as the funding of major projects for children's hospital wards, special schools and other children's support groups.

Variety WA began in 1980 and, since then, has raised and given away more than \$20 million to enrich the lives of children in need. Funds are raised each year through a range of unique events including the iconic Variety Bash, Variety Bike Run and Variety 4WD Challenge, as well as the quirky Variety Santa Fun Run, many generous corporate sponsorships and individual donations from the community.

Variety WA operates with a small but dedicated team of staff in the office in Victoria Park, with volunteers spread throughout the state. The Midwest, Pilbara and Goldfields branches, located in Geraldton, Port Hedland and Kalgoorlie respectively, are largely volunteer run, with local supporters and donors raising funds to deliver help back to local children in need.

Thanks to the efforts of all volunteers and sponsors, 100% of every tax deductible donation made to Variety WA goes directly to sick, disadvantaged and special needs kids.

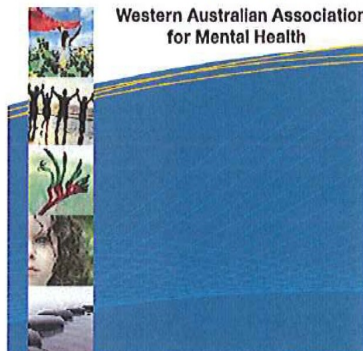


# MENTAL HEALTH WEEK 7 - 14 OCTOBER



**WAAMH**

Western Australian Association  
for Mental Health



**Celebrate,  
Connect, Grow**



Government of Western Australia  
Mental Health Commission

mental health  
association nsw



## MENTAL HEALTH WEEK 7 - 14 OCTOBER NEWS

*The WA Association for Mental Health (WAAMH), working in partnership with the Mental Health Commission, coordinates events and activities to recognise Mental Health Week during October. The timing of the campaign centres on World Mental Health Day, which is marked each year on 10 October.*

### What is the theme this year?

The theme for Mental Health Week this year is '**Celebrate, Connect, Grow**' and encourages all of us to act on the big and small things we can do to increase our own wellbeing as well as the wellbeing of those around us.

This theme is about **celebrating** the positive events in your life, as well as the strengths and values that have helped you through

more challenging times. It is about **connecting** with others by paying attention to your close relationships, or by reaching out and making new friends. And it is about **growing**: expanding your horizons and trying something new that creates meaning and purpose for you.



### Resources available

The aim of Mental Health Week is to promote social and emotional wellbeing to the community, encouraging people to maximise their health potential, enhancing the coping capacity of communities, families, individuals and increasing mental health recovery.

We would like to help get you started with a selection of resources.

<http://www.waamh.org.au/mental-health-week-2012/mental-health-week-resources>

- Starter kit: tips on planning and evaluating your event.
- Event registration form: let us promote your event through our network.
- WAAMH members can access free resources: posters, flyers and balloons.
- Not a member - there are resources to purchase: We have a selection of colourful posters, balloons, stress balls, and a student activity book (6-8-years) aimed to encourage students to think about themselves and each other.



Resources are popular so place your order as soon as possible. If you are ordering for multiple sites, please submit separate orders.





## The West Australian and Mental Health Week

On Monday 1 October The West Australian will publish a special colour lift-out to raise awareness of Mental Health Week. Reaching stakeholders and the wider population both metropolitan and regional, we invite you to participate and use this opportunity to profile your organisation.

The West Australian is supporting us with great value advertising rates - to take advantage of this opportunity, please see the attached flyer for more information, or contact Eithne Healy at The West Australian on 9482 3559.

**Watch this space as we bring you up-to-date with events and activities during Mental Health Week.**

### Opening Ceremony Sunday 7 October Mental Health 20x20 Art Exhibition

Subiaco Arts Centre 5.00pm

A display of 20cmx20cm canvases decorated to the theme for the Week 'Celebrate, Connect, Grow' will be on display.

### Turn Blue 4 A Day 10 October

#### World Mental Health Day - Murray Street Mall

Collect a positive thought card and release your worries in a blue balloon - a fabulous opportunity to promote positive mental health messages

### Mental Health Week Quiz Friday 12 October

#### Manning Bowling Club 7.00pm

PRRAWA have organised a 'sector' quiz night. Community organisations will be invited to organise a table and share a night of 'sector rivalry'. The focus of the evening is to promote the recovery projects in WA.



### Arafmi Walk of Pride Sunday 14 October 11.30

The annual Walk of Pride against stigma is this year being held at Fremantle. Walking from The Round House to King's Square.

### Closing Ceremony - SOUNDBLAST!

#### King's Square Fremantle

#### Sunday 14 October 12.00 - 4.30pm

Soundblast is an all-ages youth event. 2012 will be our inaugural year and it will be the launch party for the 2012 Music Feedback CD.



### The Putback Men's Basketball Tournament

#### 13-14 October - Willetton Basketball Stadium

Stadium

Registrations open - [www.theputback.com.au](http://www.theputback.com.au)

## Nominations Open: Act-Belong-Commit Awards 2012

Following the inaugural Act-Belong-Commit Awards in 2011, Mentally Healthy WA is pleased to announce the Awards will now be a regular feature on the Act-Belong-Commit calendar.

The 2nd annual Act-Belong-Commit Awards acknowledge individuals who live the Act-Belong-Commit way of life and showcase organisations that are leaders in community-based mental health promotion.

2012 Award categories include:

Individual - Youth

Act-Belong-Commit Partner

Primary School

Individual - Adult

Act-Belong-Commit Site

Secondary School

Individual - Senior

Nominations close on 24 August 2012

We urge you to nomination an individual, partner or school that you believe is worthy of recognition. There are some great prizes to be won.

## Create Your Own TV Advert!

Ever wondered what goes in to creating a tv ad? Mentally Healthy WA is calling all budding film enthusiasts, those passionate about mental health—and everyone who enjoys learning new skills and participating in community projects to create their own TV ad, based on the positive mental health message Act-Belong-Commit.

The competition encourages people to think about mental health, what it means to them, and how they keep mentally healthy.

Entries close 21st September 2012.

**For the full details on how to enter visit [actbelongcommit.org.au](http://actbelongcommit.org.au)**

**Keep up-to-date with Mental Health Week news and events - [www.waamh.org.au](http://www.waamh.org.au)**





# Happy Birthday

SEPTEMBER

7th Dianne Daniels

20th Jenny Goodbourn

OCTOBER

1st Katie Jeffries

14th Natalie Broad

24th Simon Broad

24th Georgina Broad

25th Jenny Mitchell

Please email [admin@murchison](mailto:admin@murchison) to update





# Barry Haase

Federal Member for Durack

## MEDIA RELEASE

28 August 2012

### **Mobile phone blackspots thrown on backburner for another three years**

The Gillard Government's response to the Sinclair Review into regional Telecommunications is another slap in the face for regional communities said Mr Haase, Federal Member for Durack

The review found that mobile phone coverage is the number one telecommunications issue in regional Australia, and recommended the Government introduce a co-investment program with state and local government to improve mobile coverage. The Government has decided not to fund any new program until the NBN network is complete in 2015.

"The Howard Government invested \$145 million to improve mobile coverage in regional Australia. Since Labor was elected in 2007, not one additional cent has been invested by the Government in the mobile phone network in the regions" said Mr Haase.

"Highway 1 runs around Australia, including through my electorate, for some 2,000 kilometres and yet for hundreds of kilometres at a time on that very popular and major highway there is no mobile coverage.

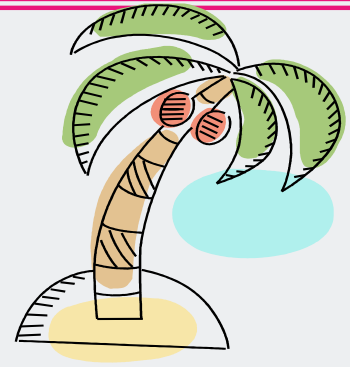
Black spots make accidents in the bush more onerous to both victim and those emergency service personnel responding. The number of black spots for mobile coverage is inexcusable and something must be done. People in the bush pay their taxes and expect to get the same services as those in the cities", said Mr Haase.

Mr Haase stated "It is simply not good enough to leave people in the bush stranded whilst city dwellers get faster internet services to peruse the latest fashions on the web"

END

Media contact: De-Arne O'Neil (08) 99 64 2195 0407 379 622 De-Arne.O'Neil@aph.gov.au





# Murchison Oasis Roadhouse

**Opening Hours 6 am to 7 pm**

**24hr access to bowser with card swipe facility)**

**Community Postal Service.**

**You can post mail and purchase stamps and envelopes from us.**



## Accommodation Rates

**Motel Units \$65 per night**

**Powered Site \$20 per night**

**Unpowered \$10 per night**

**Free BBQ in the Gazebo**

**We are your local Information Centre**

**and also supply.....**

**Ice**

**Fuel**

**Clean Showers & Toilets**

**Hot Coffee**

**Home made cakes & slices**

**Ice creams**

**Icy cold drinks**

**Grocery Lines**

**Dine in meals**

**Hot takeaway Food**

**Pia Energy Cards**

**Snack Foods**

**Contact : Jeanette or Rex 08 99613875**

**Email: [murchisonoasis@hotmail.com](mailto:murchisonoasis@hotmail.com)**



**Carnarvon Rangelands Biosecurity Assoc. Inc.**

**AGM**

**Tuesday 25<sup>th</sup> September 2012**

**Start At 8:30am sharp**

**Dept of Agriculture & Food WA Bomb Shelter**

**262 South River Road, Carnarvon**

**Committee Meeting to follow AGM**

**Please call Kim**

**0438 168 696 for any enquiries**







# Girlie Thoughts



I read this article that said the typical symptoms of stress are eating too much, impulse buying, and driving too fast. Are they kidding? That's my idea of a perfect day!

A friend of mine confused her Valium with her birth control pills... she now has 14 kids but she doesn't really care..

Skinny people irritate me! Especially when they say things like... 'You know sometimes I forget to eat!' .....Now, I've forgotten my address, my mother's maiden name, and my keys, but I have never forgotten to eat.

One of life's mysteries is how a 2 pound box of chocolates can make a woman gain 5 lbs.

My mind not only wanders, it sometimes leaves completely.

The best way to forget your troubles is to wear tight shoes.

The nice part about living in a small town is that when you don't know what you are doing, someone else does.

The older you get, the tougher it is to lose weight, because by then your body and your fat are really good friends..

Just when I was getting used to yesterday, along came today...

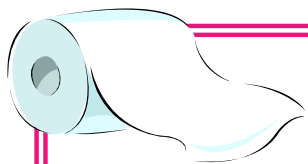
Sometimes I think I understand everything, and then I regain consciousness.

I gave up jogging for my health when my thighs kept rubbing together and setting fire to my panties.

Amazing! You hang something in your closet, for a while, and it shrinks 2 sizes!

**Live simply...Laugh Often...Love Deeply**





## Ladies Toilets— very funny, cos its so true...

When you have to visit a public toilet, you usually find a line of women, so you smile politely and take your place. Once it's your turn, you check for feet under the cubicle doors. Every cubicle is occupied.

Finally, a door opens and you dash in, nearly knocking down the woman leaving the cubicle. You get in to find the door won't latch. It doesn't matter, the wait has been so long you are about to wet your pants!

The dispenser for the modern 'seat covers' (invented by someone's Mum, no doubt) is handy, but empty. You would hang your bag on the door hook, if there was one, so you carefully, but quickly drape it around your neck, (Mum would turn over in her grave if you put it on the FLOOR!) down with your pants and assume 'The Stance'.

In this position, your aging, toneless, thigh muscles begin to shake. You'd love to sit down, but having not taken time to wipe the seat or to lay toilet paper on it, you hold 'The Stance.' To take your mind off your trembling thighs, you reach for what you discover to be the empty toilet paper dispenser. In your mind, you can hear your mother's voice saying, 'Dear, if you had tried to clean the seat, you would have KNOWN there was no toilet paper!'... Your thighs shake more.

You remember the tiny tissue that you blew your nose on yesterday - the one that's still in your bag (the bag around your neck, that now you have to hold up trying not to strangle yourself at the same time). That will have to do.

Someone pushes your door open because the latch doesn't work. The door hits your bag, which is hanging around your neck in front of your chest and you and your bag topple backward against the tank of the toilet.. 'OCCUPIED!' you scream, as you reach for the door, dropping your precious, tiny, crumpled tissue in a puddle on the floor, while losing your footing altogether and sliding down directly onto the TOILET SEAT. It is wet of course. You bolt up, knowing all too well that it's too late. Your bare bottom has made contact with every imaginable germ and life form on the uncovered seat because YOU never laid down toilet paper - not that there was any, even if you had taken time to try. You know that your mother would be utterly appalled if she knew, because you're certain her bare bottom never touched a public toilet seat because, frankly, dear, 'You just don't KNOW what kind of diseases you could get.

By this time, the automatic sensor on the back of the toilet is so confused that it flushes, propelling a stream of water like a fire hose against the inside of the bowl and spraying a fine mist of water that covers your bum and runs down your legs and into your shoes. At this point, you give up. You're soaked by the spewing water and the wet toilet seat. You're exhausted. You try to wipe with a sweet wrapper you found in your pocket and then slink out inconspicuously to the sinks.

You can't figure out how to operate the taps with the automatic sensors, so you wipe your hands with a dry paper towel and walk past the line of women still waiting

You are no longer able to smile politely to them. A kind soul at the very end of the line points out a piece of toilet paper trailing from your shoe. (Where was that when you NEEDED it?)

You yank the paper from your shoe, plonk it in the woman's hand and tell her warmly, 'Here, you just might need this.

As you exit, you spot your hubby, who has long since entered, used and left the men's toilet. Annoyed, he asks, 'What took you so long and why is your bag hanging around your neck?

This is dedicated to women everywhere who deal with any public toilets. It finally explains to the men what really does take us so long. It also answers that other commonly asked question about why women go to the toilets in pairs. It's so the other girl can hold the door, hang onto your bag and hand you Kleenex under the door.

This HAD to be written by a woman! No one else could describe it so accurately.







**Shane Love**  
CANDIDATE FOR MOORE



**THE NATIONALS**  
*for Regional WA*

## **LOCALS, VISITORS, BUSINESS BENEFIT FROM \$46M MID WEST ROAD UPGRADES**

21 August 2012

The Nationals WA candidate for Moore, Shane Love and candidate for the Agricultural Region Martin Aldridge have welcomed more than \$46 million to upgrade Mid West roads.

"This is great news for Mid West communities, for the region's many visitors and for transport business operators," Mr Love said.

The funding comes as result of the Safer Country Roads Initiative and includes \$20.8 million from *Royalties for Regions*.

Announced today in Geraldton, the project will include an immediate three-year program to upgrade Wubin-Mullewa Road between Perenjori and Morawa.

"The upgrade will see the completion of the two-lane seal width on the Perenjori and Morawa section of the Wubin-Mullewa Road, which will greatly improve road safety," Mr Love said.

"Construction will also begin on sealing and creating passing areas on various sections of Goldfields Highway between Wiluna and Meekatharra."

Both road projects were identified as priorities in the Mid West Investment Plan (MWIP).

"This latest funding is part of a \$220 million of *Royalties for Regions* funding allocated over five years to the assist in the infrastructure projects outlined in the MWIP," Mr Love said.

"The Mid West Investment Plan will provide increased economic opportunities and enhance the liveability and social fabric of the Mid-West region."

Candidate for the Agricultural Region, Martin Aldridge said the road upgrade projects were required to better cater for population and freight increases the Mid West.

"These works are essential to helping ensure the safety of locals, visitors and workers travelling on Mid-West roads.

"It's also integral to the efficient and productive operation of the region's mining and other business sectors," Mr Aldridge said.

"This is just another example of how *Royalties for Regions* is making the Mid West a better place to live, work and invest."

**For more information contact Candidate for Moora, Shane Love P: 0427 684 596 E: [shane.love@nationalswa.com](mailto:shane.love@nationalswa.com) W: [www.shanelove.com.au](http://www.shanelove.com.au) Candidate for the Agricultural Region, Martin Aldridge P: 0427 972 028 E: [martin.aldridge@nationalswa.com](mailto:martin.aldridge@nationalswa.com) W: [www.martin.aldridge.com.au](http://www.martin.aldridge.com.au)**



# Media Release

Hon **Wendy Duncan** MLC

Member for Mining & Pastoral Region | Parliamentary Secretary to the Minister for Regional Development, Lands | Parliamentary Leader in the Legislative Council

## ROYALTIES FOR REGIONS IS A LONG OVERDUE REFORM FOR WESTERN AUSTRALIA

13 AUGUST 2012

Contrary to the claims of the Institute of Public Affairs that Royalties for Regions should be abolished as part of reforms needed in Western Australia, Member for Mining and Pastoral Region, Wendy Duncan, has stated that the programme is itself a long overdue reform for the State.

"Royalties for Regions has redressed 50 years of neglect and lack of planning for regional Western Australia," Ms Duncan said.

"I wonder whether Mr Berg has even travelled throughout regional Western Australia to see the dramatic difference Royalties for Regions has achieved in the three short years since its inception."

Ms Duncan, who has been preselected for The Nationals for the seat of Kalgoorlie, said that prior to the introduction of Royalties for Regions people were living in containers in Karratha, Ord Stage Two had sat on the books for decades without action, hospitals were run down and neglected and the Royal Flying Doctor Service was described as "an interest group" as it was poised on the brink of financial collapse.

"One of the greatest achievements of Royalties for Regions is that it has brought local governments, Regional Development Commissions, as well as key government agencies such as WA Planning Commission, power utilities and Water Corporation, to the table to undertake long overdue strategic planning."

She said that prior to Royalties for Regions there was no planning, no recognition that Western Australia's predicted population growth would need to also be accommodated in regional areas and no vision for a well-balanced, diversified and decentralised Western Australia.

"It is an absolute insult that some academic calls this programme a National Party slush fund when the key mantra of the programme is "Local Priorities and Local Decision-making"."

"The Institute's report proves that, in spite of all the lip service from other political parties, Royalties for Regions is vulnerable without The Nationals to ensure it continues to deliver long overdue, strategically directed investment into regional Western Australia."

Ends...

**For more information contact Hon Wendy Duncan MLC on 9071 1500 or 0438 782 034.**

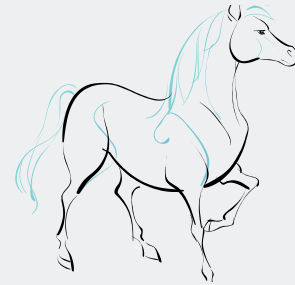
wendy.duncan@mp.wa.gov.au    www.wendyduncan.com.au  
PO Box 2470, Esperance WA 6450    Dutton Arcade, Andrew Street, Esperance WA 6450  
ph 08 9071 1500    fax 08 9071 1633    mob 0438 782 034    freecall 1800 622 161





# Landor Races

**Saturday 6th—Monday 8th October 2012**



## Eastern Gascoyne Race Club

### History and Background

It's Landor time again!

The Landor Races are the Eastern Gascoyne Race Club's traditional bush race meeting. The meeting is held annually in the third term school holidays (October) at the racecourse near Landor Station.

The meeting has a colourful history and truly outback flavour. In 1921 at a combined mustering camp, which was the custom in those days, a number of stockmen from stations in the area from Milgun, Mt Augustus, Mt Seabrook, Erravilla and Landor were having a day off. These men were resting and doing their washing when they started to argue about who had the fastest horse. Following discussions with interested parties from the surrounding stations, the EGRC was formed and the Landor tradition was born.

The event has now been run annually almost continuously since 1921, except for several years during the World War 2 and has been run on the same principles since the early days – that it is held in the spirit of a strictly amateur race meeting with local station horses and riders. In this modern age this means that although all horses must be registered thoroughbreds, there is a special category of races for horses born in the district: "nor west bred", and other races for horses declared as 'district qualified' which effectively means they haven't raced anywhere else 6 months prior to the meet. There are no starting gates at Landor – all races are "walk up starts".

A unique feature of Landor in keeping with the amateur spirit was that when seasons were good, a "Grass Fed" meeting was declared and trainers could not feed or handle their horses until six weeks before the meeting. In dry or drought years, a "Corn Fed" meeting was declared and there was no restriction on the length of time a horse can be yarded and fed. At the 2007 AGM it was agreed that because trainers & horses now come from a wide-spread area every meeting will effectively be a 'corn fed' meeting.

A 28 member committee comprised mostly of local pastoralists conducts the event and meets twice a year on stations throughout the district. A comprehensive EGRC Club Constitution determines the operation of the event with races under the rules and regulations of RWWA. The race meeting is open to RWWA registered horses that are classified as North West Bred (i.e. horses bred above the 28<sup>th</sup> parallel), District Qualified (i.e. have spent six months prior to the meeting above the 28<sup>th</sup> parallel) or Corn Fed Horses (horses that have not won a race on a Metropolitan track). Jockeys must be licensed track riders and must have the approval of the Steward to ride.

Nowadays, the Landor weekend begins with a race day on Saturday- the Ladies Bracelet is the feature event. Sunday is the traditional Gymkhana day. The action starts in the morning with the kid's "lead on" events and finishes with the adult's competition in the afternoon. This is followed by the fun events of the "Tug of War" and foot races for everyone.



Monday is the big race day, with the main event being the Landor Cup. However, you can join the crowd for social polocrosse in the morning before the races begin. Race days are tremendous fun in the outback, with fashions ranging from moleskins and shirts, Akubras, fillies in frocks, mares dressed up, with hats of course. Evening entertainment can be found at the Two-up table or in the hall dancing or just standing around the bar catching up with old friends. A 'calcutta' is held on Friday night for the Ladies Bracelet and again on Sunday night for the Cup. It's great entertainment to check out which horses are attracting the money & who has hopes for a big win. Saturday night is now Landor Ball night, but there is always some action in the hall for those with energy left at the end of the day.

## LANDOR RACES 2012

### FACILITIES AVAILABLE AND HOW TO GET THERE

**Location:** Landor homestead is 236 km northwest of Meekatharra, the racecourse is a further 22kms north of Landor homestead on the Mt Augustus road.

**Duration:** Most visitors will arrive this year on Friday 5<sup>th</sup> October and depart Tuesday 9<sup>th</sup> Oct. **Please note: there is no running water or other facilities prior to Thursday night. The majority of the committee & Landor organisers do not arrive until late Thursday or Friday.**

**Facilities:** The club has built extensive permanent facilities over the years such as horse stables, water supply, electricity supply, numerous shower and toilet blocks, covered grandstands, bar and betting ring, dance hall and dining room.

Public campsites are provided adjacent to the racecourse complete with showers and toilets. Firewood may be provided to the campsites. **Please note: all the campsites along the creek are traditional established sites (often occupied by the same station for 80 years or more) and if you set up camp there you will be asked to move on.**

Police from Meekatharra are based at the racecourse for the weekend. A doctor will attend over the weekend in case of emergencies. In addition, St John's Ambulance Meekatharra provides an ambulance service for all races. The Royal Flying Doctor Service can provide emergency evacuation from the racecourse if required.

An airstrip constructed to RFDS standard is situated at the racecourse.

### Accommodation:

Most visitors to Landor come prepared to camp, mostly in tents, but an increasing number of caravans are making the trip. Ample good quality water is available from the club's own bores and power is provided at the visitors camp sites near the racecourse.

Although fuel and some catering is provided at the racecourse, visitors should aim to be self sufficient.

**Contacts:** President: **Mr. Miles Bain**, Walkaway

Secretary: **Mr Doug Brownlie**, Yakabindie Station, Via Leinster.

Ph or Fax 08 90375944

Email: landor@live.com.au





**Vincent Catania MLA**

**MEMBER FOR NORTH WEST | CANDIDATE FOR NORTH WEST CENTRAL**



**THE NATIONALS**  
*for Regional WA*

22 August 2012

**NATIONALS WA BOOST COUNTRY AGE PENSION FUEL CARD, VINCENT CATANIA MLA**

More than 45,000 regional pensioners could benefit from an increase to the Country Age Pension Fuel Card, if The Nationals WA retain the balance of power after the 2013 State election.

Member for North West and The Nationals WA Candidate for North West Central, Vincent Catania, said the Fuel Card increase – announced by Leader of The Nationals Brendon Grylls on Saturday – was a key commitment in the lead up to the next election.

"As part of our ongoing commitment to regional pensioners, the annual value of the Country Age Pension Fuel Card will increase in line with the CPI to about \$550," Vince said.

"This move will be welcomed by the thousands of regional pensioners who use the Fuel Card each day to remain active, mobile and engaged in their community."

Vincent Catania said 45,000 regional pensioners benefit from the Fuel Card each year, including more than 1100 in North West Central.

"Regional pensioners don't have access to the same public transport as their city-counterparts and often rely on private transport to attend medical appointments, go shopping or visit friends.

"The Nationals are addressing this inequality by delivering some assistance through the Fuel Card. I receive great feedback about the difference that the Royalties for Regions Fuel Card is making for pensioners in the North West."

Jacqui Boydell, Nationals WA candidate for Mining and Pastoral, said the Country Age Pension Fuel Card would continue to be a cornerstone of The Nationals WA policy platform for many years to come.

"This program is a much valued local initiatives which has improved outcomes for regional families, businesses and communities." Added Jacqui Boydell

The increase to the Country Age Pension Fuel Card was announced at The Nationals WA State Conference on Saturday, August 18.

Other announcements at The Nationals WA State Conference included the Regional Cities Initiative and the Goldfields Strategic Development Plan.

Media contact – **Vincent Catania**

Telephone: **08 99412999**





# Dog Licences

## Are Due On 1 November

The Shire of Murchison wishes to remind residents that the Dog Act 1976 requires all dogs over three months of age to be licensed.

To licence your dog(s), please call in at the shire office, contact the Shire Office on 99637999 or alternatively go to the website ([www.murchison.wa.gov.au](http://www.murchison.wa.gov.au)) and follow the links to the Dog Registration page. All paperwork can be done via the fax and council staff are generally \*not required to view the dog(s).

### Registration Fees

#### 1 Year

Unsterilised Dog or Bitch	\$30.00
Sterilised* Dog or Bitch	\$10.00
Pensioners	$\frac{1}{2}$ Fee
Working Dogs	$\frac{1}{4}$ Fee

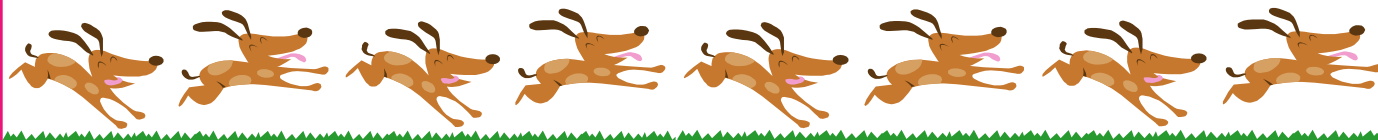
#### 3 Years

Unsterilised Dog or Bitch	\$75.00
Sterilised* Dog or Bitch	\$18.00
Pensioners	$\frac{1}{2}$ Fee
Working Dogs	$\frac{1}{4}$ Fee

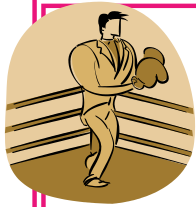
Registrations made after 31st of May  $\frac{1}{2}$  Fee

*\*Please note that proof of Sterilisation is required. This can be either a Vet Certificate or a visual inspection by Council Staff.*

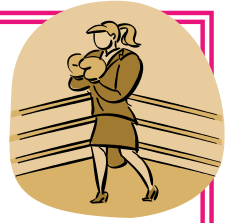
*Annual registrations made are for the period 1 November to 31 October.*



<b>2011/2012</b> <b>Summary of wild dogs</b> <b>caught/shot by Rob`t` dog</b>	Byro	24
	Narryer	10
	Curbur	10
	Manfred	10
	Innouendy	8
	Meeberrie	7
	Milly	3
	Yunda	3
	Kalli	1
	Boolardy	1



# HOW TO START A FIGHT



## **The Unreasonable Wife**

My wife and I were watching Who Wants To Be A Millionaire while we were in bed. I turned to her and said, 'Do you want to have some fun?'

'No,' she answered. I then said, 'Is that your final answer?'

She didn't even look at me this time, simply saying, 'Yes..'

So I said, "Then I'd like to phone a friend."

**And that's when the fight started...**

## **The Humour-less Wife**

I took my wife to a restaurant.

The waiter, for some reason, took my order first.

"I'll have the rump steak, rare, please."

He said, "Aren't you worried about the mad cow?"

"Nah, she can order for herself."

**And that's when the fight started...**

## **The Lazy Wife**

My wife sat down next to me as I was flipping channels.

She asked, "What's on TV?"

I said, "Dust."

**And that's when the fight started...**

## **The well rounded Husband**

My husband was hinting about what he wanted for our upcoming anniversary.

He said, "I want something shiny that goes from 0 to 150 in about 3 seconds."

I bought him bathroom scales.

**And that's when the fight started...**

## **The Soft Husband**

After retiring, I went to the Social Security office to apply for Social Security. The woman behind the counter asked me for my driver's License to verify my age. I looked in my pockets and realized I had left my wallet at home. I told the woman that I was very sorry, but I would have to go home and come back later. The woman said, 'Unbutton your shirt'. So I opened my shirt revealing my curly silver hair. She said, 'That silver hair on your chest is proof enough for me' and she processed my Social Security application..

When I got home, I excitedly told my wife about my experience at the Social Security office...She said, 'You should have dropped your pants. You might have gotten disability, too.'

**And that's when the fight started...**

## **The Masochistic Husband**

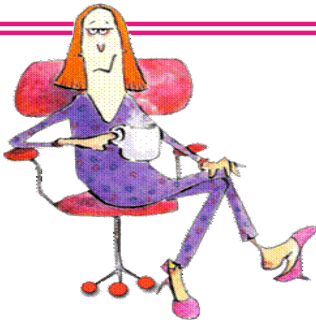
My wife was standing nude, looking in the bedroom mirror. She was not happy with what she saw and said to me, "I feel horrible; I look old, fat and ugly. I really need you to pay me a compliment."

I replied, "Your eyesight's damn near perfect dear"

**And that's when the fight started...**







# Said To Me!

**He said to me.... I don't know why you wear a bra; you've got nothing to put in it.**

I said to him .... . You wear pants don't you?

**He said to me. ... What have you been doing with all the grocery money I gave you?**

I said to him .. ..... Turn sideways and look in the mirror! Ouch....

**He said to me. . How many men does it take to change a roll of toilet paper?**

I said to him .. . I don't know, its never happened.

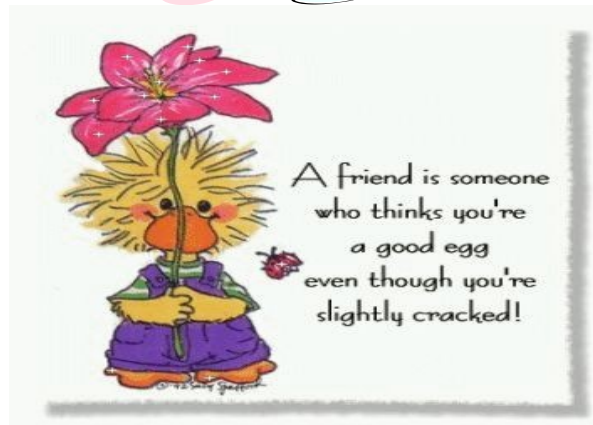
**He said to me ... . Shall we try swapping positions tonight?**

I said .. That's a good idea - you stand by the stove & sink while I sit on the sofa and do nothing.

**He said to me.... Why are married women heavier than single women?**

I said to him .. . . Single women come home, see what's in the fridge and go to bed.

Married women come home, see what's in bed and go to the fridge.



I was visiting my son and daughter-in-law last night, when I asked if I could borrow a newspaper.

'This is the 21st century, old man,' he said. 'We don't waste money on newspapers. Here, you can borrow my iPad.'

'I can tell you, that fly never knew what hit it.....'





## **2012 ON THE ROAD AGAIN TOUR**

raising funds for the  
Royal Flying Doctor Service in WA

After raising over \$100,000 for the Royal Flying Doctor Service in WA, planning for this year's ON THE ROAD AGAIN TOUR is well under way. The OTRA Tour will leave Kalbarri Sunday 7 October and after travelling 2,500kms through the Gascoyne / Coral Coast regions will finish in Yanchep on Saturday 13 October.

OTRA Tours Inc., a not-for-profit charitable organisation with tax deductible status, runs the OTRA Tour as a "Thank You" to the participants for raising funds to support the Royal Flying Doctor Service in WA. It is a 7 day mystery adventure through some of WA's spectacular outback regions and participants are given route notes each day to guide them to their overnight stop with plenty of fun and surprises along the way.

The OTRA Tour is open to pre 1980 vehicles plus any-age 4WDs and we encourage entrants to adopt a theme for their vehicle plus crew during the event. We anticipate over 20 participating vehicles plus 6 support vehicles joining us this year and the OTRA Tour is fully supported with volunteer officials including mechanical support, a medical team, baggage truck plus other support crew to assist wherever required along the course.

As part of the entry participants are encouraged to raise at least \$2,500 per vehicle for the Royal Flying Doctor Service in WA. The RFDS is a not-for-profit charitable organisation that provides free aero medical emergency and comprehensive healthcare services to people who live, work and travel in regional and remote Australia.

For more information regarding the 2012 ON THE ROAD AGAIN TOUR don't hesitate to call me on mob: 0408 947 794 or email: [eforce@iexpress.net.au](mailto:eforce@iexpress.net.au)

Best regards

Russell "Squadron Leader" Lanyon

OTRA Tours Inc.







## 2012 ON THE ROAD AGAIN TOUR

raising \$\$ for the Royal Flying Doctor Service in WA

7 – 13 October COURSE

<i>Date</i>	<i>From</i>	<i>To</i>
Sun 7	Kalbarri	Coolcalalaya Station - lunch
	Coolcalalaya Station	Murchison Settlement - overnight
Mon 8	Murchison Settlement	Carey Downs Station - lunch
	Carey Downs Station	Carnarvon - overnight
Tues 9	Carnarvon	Kennedy Ranges - lunch
	Kennedy Ranges	Bidgemia Station - overnight
Wed 10	Bidgemia Station	Meedo Station - lunch
	Meedo Station	Nanga Bay - overnight
Thur 11	Nanga Bay	Nerren Nerren Station - lunch
	Nerren Nerren Station	Port Gregory - overnight
Fri 12	Port Gregory	Coalseam - lunch
	Coalseam	Port Denison - overnight
Sat 13	Port Denison	Cervantes - lunch
	Cervantes	Yanchep - FINISH



**Tidy Towns**

Sustainable Communities

**2012**  
**General Appearance**  
**Award**

MIDWEST-GASCOYNE

**Murchison**

Mr Mel Hay, APM  
Chairman  
Keep Australia Beautiful Council (WA)



Department of Environment and Conservation  
Department of Regional Development and Lands  
Waste Authority



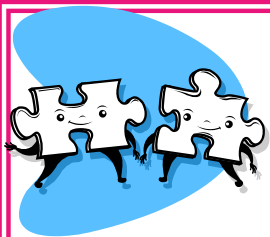
**CLIFFS**



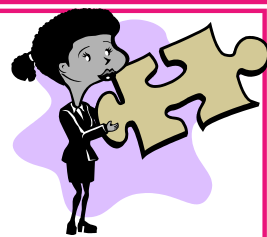


## ***YOU KNOW YOU ARE LIVING IN 2012 when...***

- 1. You accidentally enter your PIN on the microwave.***
- 2. You haven't played solitaire with real cards in years.***
- 3. You have a list of 15 phone numbers to reach your family Of three.***
- 4. You e-mail the person who works at the desk next to you.***
- 5. Your reason for not staying in touch with friends and family is that they don't have e-mail addresses.***
- 6. You pull up in your own driveway and use your mobile phone to see if anyone is home to help you carry in the groceries...***
- 7. Every commercial on television has a web site at the bottom of the screen***
- 8. Leaving the house without your mobile phone, which you didn't even have the first 20 or 30 (or 60) years of your life, is now a cause for panic and you turn around to go and get it***
- 10. You get up in the morning and go online before getting your coffee***
- 11. You start tilting your head sideways to smile. : )***
- 12. You're reading this and nodding and laughing.***
- 13. You are too busy to notice there was no 9 on this list.***
- 14. You actually checked to make sure that there wasn't a 9 on this list***



# Puzzles



Each of the following sets of letters can be made into a real word by adding three letters to the beginning, and the same three letters in the same order to the end.

For example, **ANGLEM** can have **ENT** added at the start and the end to become **ENT + ANGLEM + ENT = ENT-TANGLEMENT**.

**ERTAINM**  
**ISCOVE**  
**ROW**  
**IOXID**  
**ROCOS**

## Answers:

ENT + ERTAINM + ENT = ENTERTAINMENT  
RED + ISCOVE + RED = REDISCOVERED  
ING + ROW + ING = INGROWING  
ANT + IOXID + ANT = ANTIOXIDANT

At a musical recital five students (John, Kate, Larry, Mary and Nick) performed five musical pieces. Two by Bach, two by Mozart and one by Vivaldi. There were three violinists and two pianists. Each student performed only one piece, and played only one instrument. Find the order of the students, their respective instruments and the composer, with the following conditions:

1. The composers were not played consecutively. Vivaldi was played last and Mozart was played first.
2. There was one piano piece that was played between two violin pieces, and two violin pieces between the first and last piano piece.
3. There were no piano pieces by Mozart.
4. Kate played third.
5. John played a piece by Mozart, and was immediately followed by Nick, who played the piano.
6. Mary did not play a piece by Vivaldi.

## Answers:

1 = John played Mozart on the Violin  
2 = Nick played Bach on the Piano  
3 = Kate played Mozart on the Violin  
4 = Mary played Bach on the Violin  
5 = Larry played Vivaldi on the Piano

Name an ancient invention, which is still used in some parts of the world today, that allows people to see through walls.

## Answer:

A window

Rearrange these letters to make a single word:

**DRAGON LEWIS**

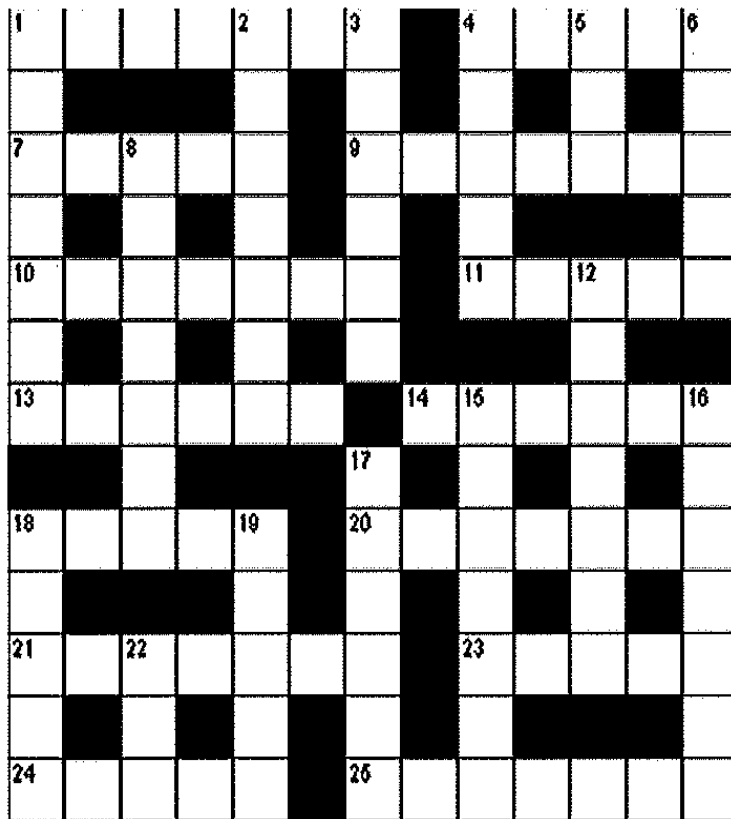
## Answer:

A SINGLE WORD



# True or False

In this crossword there are two clues for each word.  
Can you work out which is true and which is false?

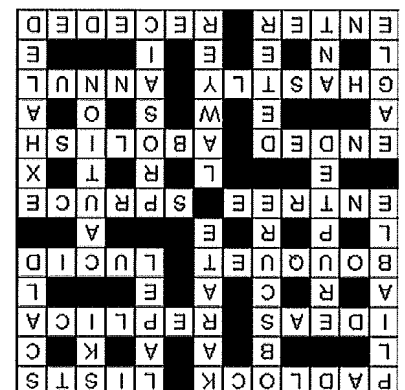


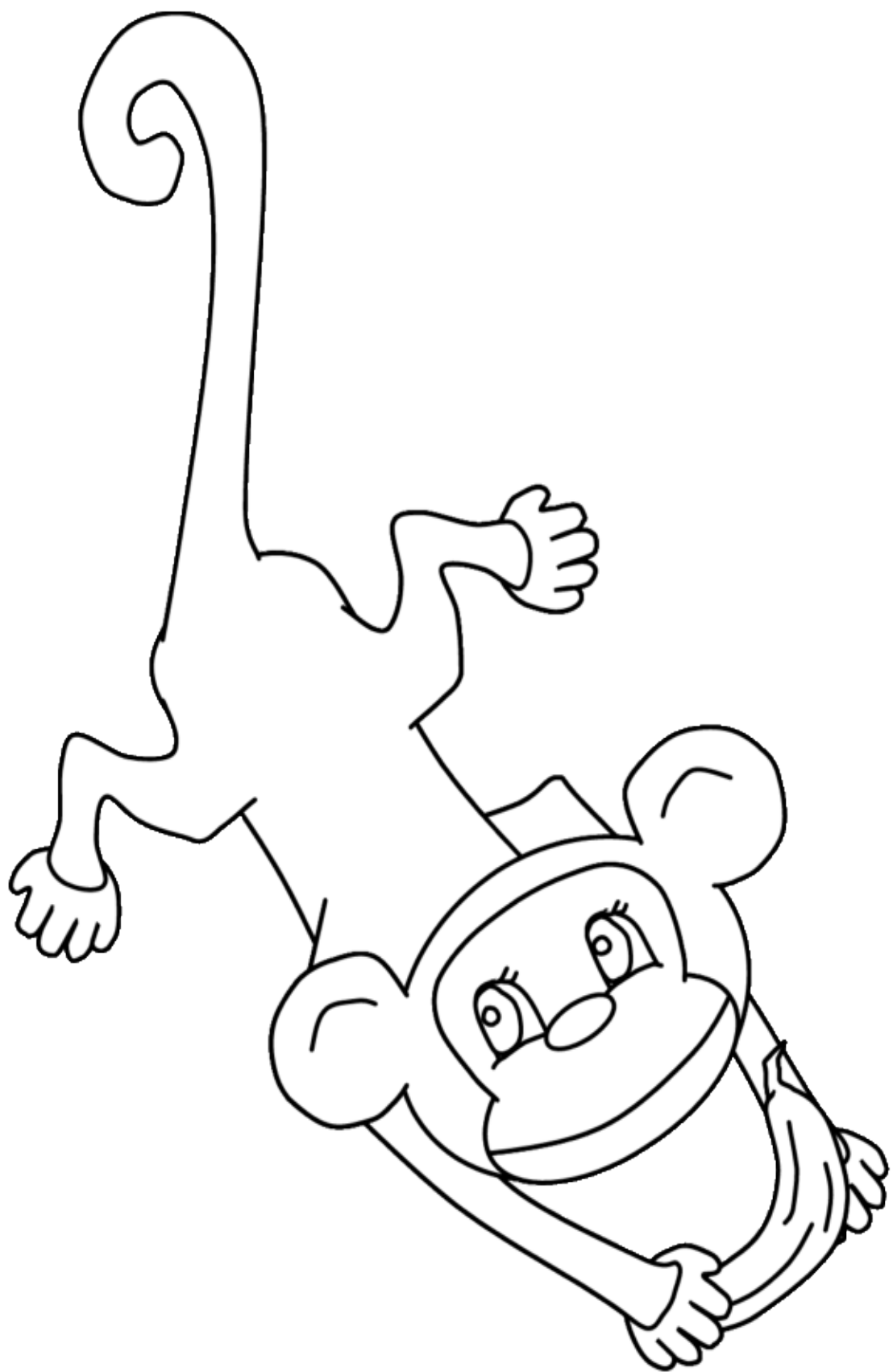
## Across

1. Security device / Sonar device (7)
4. Deducts / Enumerates (5)
7. Actions / Notions (5)
9. Copy / Opposite (7)
10. Financial arrangement / Flower arrangement (7)
11. Clear / Unclear (5)
13. Golf course / Main course (6)
14. Coniferous tree / Deciduous tree (6)
18. Started / Finished (5)
20. Introduce / Get rid of (7)
21. Gruesome / Beautiful (7)
23. Validate / Invalidate (5)
24. Go in / Go out (5)
25. Advanced / Retreated (7)

## Down

1. Flexible / Inflexible (7)
2. Vague / Obvious (7)
3. Modern art / Martial art (6)
4. Part of a jacket / Part of a shoe (5)
5. Snow runner / Athlete (3)
6. Burn with steam / Freeze with ice (5)
8. Burst out / Became dormant (7)
12. Carelessness / Introspection (7)
15. Fanciful / Humdrum (7)
16. Breathed in / Breathed out (7)
17. Surgeon / Attorney (6)
18. Bird / Fish (5)
19. Encourage / Discourage (5)
22. Insect / Mammal (3)





Hang in there!